

The Axial Skeleton

Table of Contents

- The Axial Skeleton
 - Skull
 - Vertebral Column
 - Rib Cage
- Summary
- What's Next?

In the previous segment, we learned about **The skeletal system and its parts**. In this segment, we will learn about The axial skeleton and its parts.

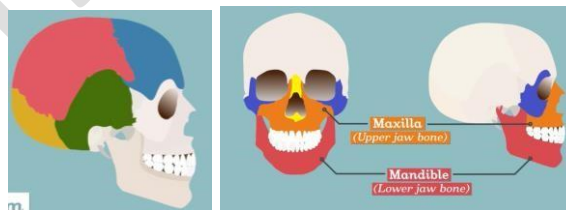
What is the Axial skeleton?

The part of the skeletal system that forms the central axis is known as the axial skeleton. It has three structures: the **Skull**, the **Vertebral Column**, and the **Rib Cage**.

- **What is Skull?**

Skull forms the bones of our head region. It is made up of four major parts: Cranium, maxilla, mandible, and accessory facial bones.

- **Cranium** is the first part forming the protective covering around the brain. It is composed of eight bones fused together.
- The **Maxilla** is the upper jaw bone.
- The **Mandible** is the lower jaw bone.
- Accessory facial bones are the remaining bones present on the skull.



Cranium

Maxilla and mandible

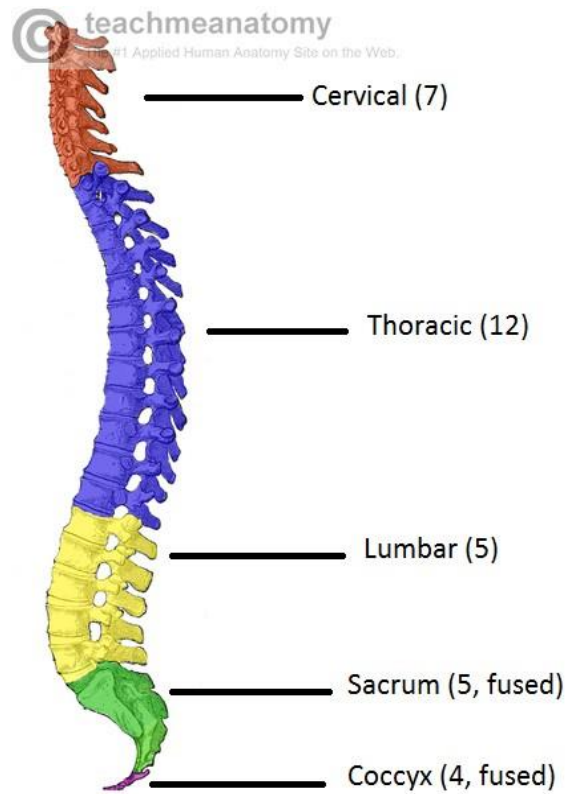
- **What is the Vertebral column?**

The vertebral column is made up of 33 bones. It is also called the **Backbone**.

It is further divided into five parts: Cervical, thoracic, lumbar, sacrum and coccyx.

- Cervical vertebrae consist of **7 Bones**.

- Thoracic vertebrae consist of **12 Bones**.
- Lumbar vertebrae consist of **5 Bones**.
- Sacral vertebrae consist of **5 fused Bones**.
- Coccygeal vertebrae consist of **4 fused Bones**.



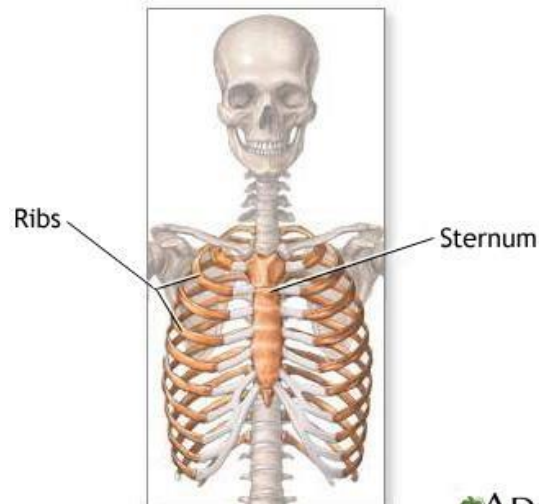
Vertebral column

● **What is a Rib cage?**

The rib cage surrounds the most delicate and vital organs like lungs.

It is made up of three parts: the vertebral column, the chest bone, and the ribs.

- The vertebral column forms the back part of the rib cage.
- The chest bone is also known as **Sternum**. It is one of the strongest bones to protect our body from injuries.
- The ribs are connected to the vertebral column and surround the lungs completely to protect them.



Rib cage

Summary

Axial Skeleton	The part of the skeletal system that forms the central axis.
Different Structures of the Axial Skeleton	
Skull	<ul style="list-style-type: none"> ● Forms bones of the head region ● Four major parts: <ul style="list-style-type: none"> ○ Cranium ○ Maxilla ○ Mandible ○ Accessory facial bones
Vertebral Column	<ul style="list-style-type: none"> ● The backbone of our body. ● Five parts: <ul style="list-style-type: none"> Cervical <ul style="list-style-type: none"> ○ Thoracic ○ Lumbar ○ Sacrum ○ Coccyx
Rib Cage	<ul style="list-style-type: none"> ● Surrounds the most delicate and vital organs. ● Three parts <ul style="list-style-type: none"> ○ Vertebral column ○ Sternum ○ Ribs

What's next?

In the next segment of Class 6 Science, we will learn about the **parts of the appendicular skeleton**.

Infinity Learn